



CheckThePart.com

✓ Open the Box

✓ Inspect the Part

✓ Verify the Return



Endorsed by AASA



Endorsed by the Auto Care Association

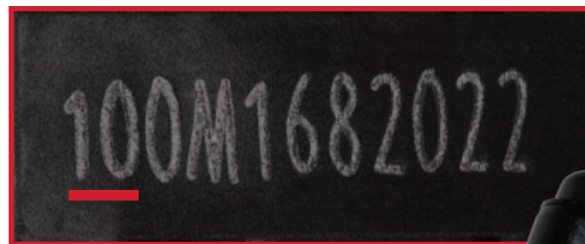
Return Guide for Oil Filter Housings

We know it can be difficult to determine if a return is valid. These simple tips will make it easier for you to decide what warranty claims are valid, and which are not.

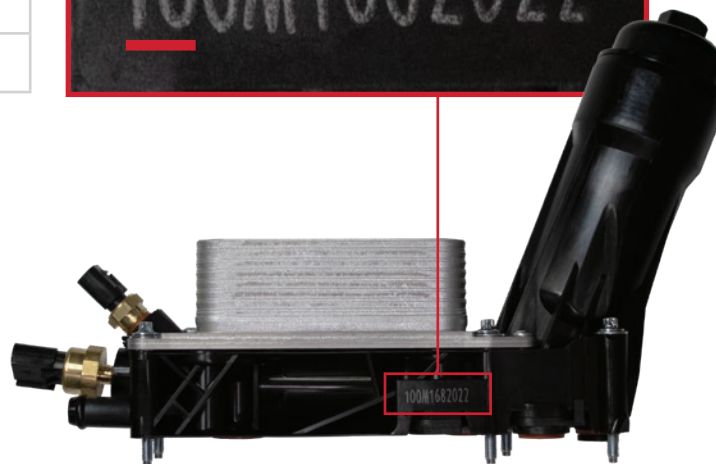
ALWAYS Open the box and check the part

- Confirm the brand of the part in the box matches the brand on the box. Standard® Oil Filter Housings will have a laser etched code on the side of the body that will begin with "10." The last four digits of the code represent the year the part was made.

PN	Code
OFH100	100XX20XX
OFH101	101XX20XX
OFH103	103XX20XX



- Check to see if the part is only missing gaskets or hardware. If the part is new and only missing hardware, you can order new hardware and put the part back into inventory.
- If the housing was over-torqued and cracked during installation, it can be denied as a warranty claim.



Sponsored by:

